

clever



10 Napier Terrace, Flat 3

, Plymouth, PL4 6ER

£160 Per week

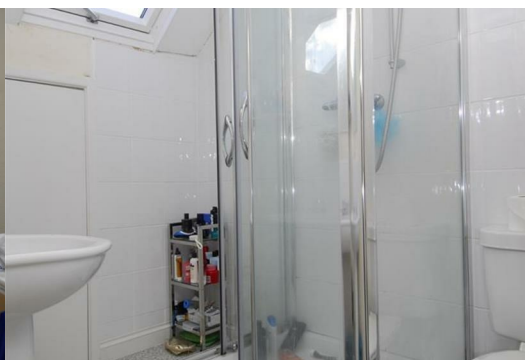
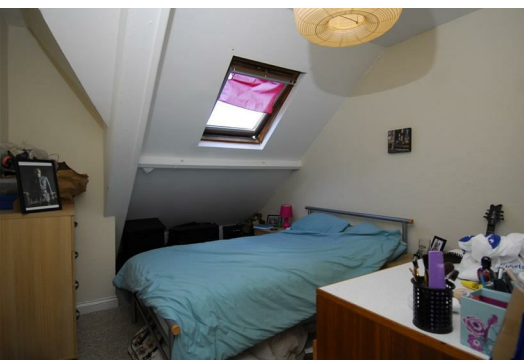


Located in the heart of Napier Terrace, Flat 3 offers a fantastic opportunity to own a charming 2-bedroom apartment in Plymouth. This delightful property boasts spacious bedrooms and a modern kitchen/diner, perfect for those who appreciate contemporary living spaces.

One of the standout features of this apartment is its access to a pleasant rear garden, providing a peaceful retreat right at your doorstep. Situated just a short walk away from the main University Campus, Plymouth Business School, and Plymouth College of Art, this location is ideal for students or professionals looking for convenience and accessibility.

Perched on the top floor, this apartment not only offers privacy and tranquility but also stunning views of the surrounding area. Whether you're a student looking for a comfortable and well-located flat or a professional seeking a stylish living space, Flat 3, Napier Terrace, is sure to impress with its blend of modern amenities and prime location.

Student property- Available 1st September
Gas, electric water and WIFI included! (fair usage policy applies)
£160pw over a 44 week tenancy.



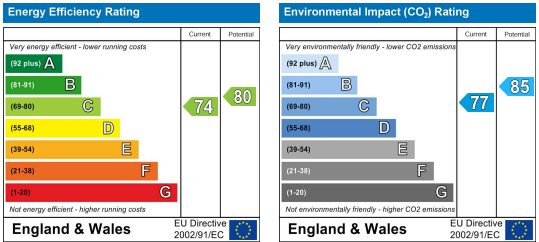
Area Map



Floor Plans



Energy Efficiency Graph



These particulars, whilst believed to be accurate are set out as a general outline only for guidance and do not constitute any part of an offer or contract. Intending purchasers should not rely on them as statements of representation of fact, but must satisfy themselves by inspection or otherwise as to their accuracy. No person in this firms employment has the authority to make or give any representation or warranty in respect of the property.